



£1,495 PCM
Orion Court
Welwyn, AL6 9FR

PROPERTY SUMMARY

An immaculate two-bedroom ground floor apartment.

Internally offering; an open plan kitchen/lounge with doors leading to a private decked sun terrace. The main bedroom with built in wardrobes and an ensuite shower room. Second bedroom and family bathroom. The property also has a video entry system.

Externally offering; a private decked sun terrace area and allocated parking space.

Location

Clock House Gardens is in a sought-after location it is 0.2 miles to the centre of Old Welwyn and local amenities, including restaurants, boutique shops and a Norman Church. This location also offers easy access to the A1(M) and Welwyn North station.

2



2



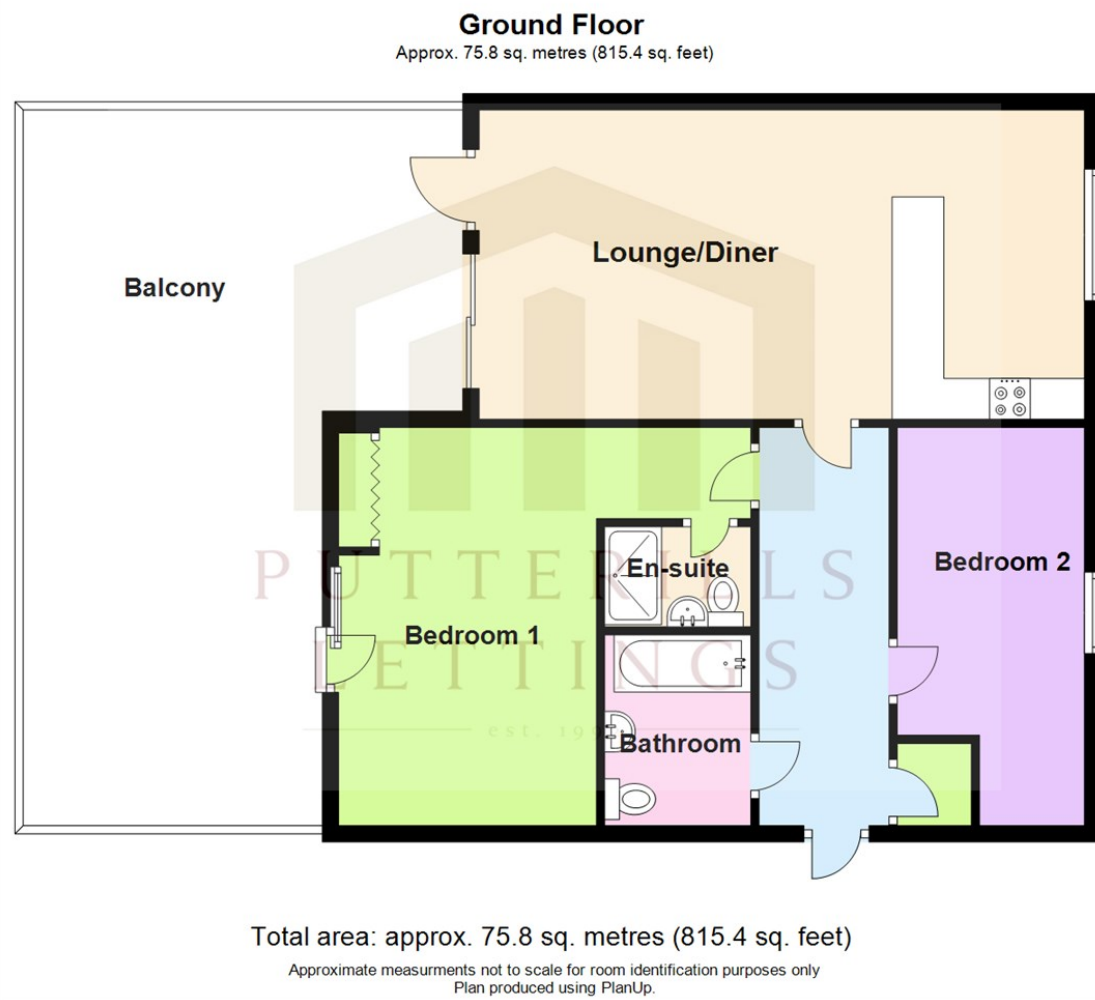
1











LOCAL AUTHORITY

Welwyn Hatfield

TENURE

COUNCIL TAX BAND

D

VIEWINGS

By prior appointment only

Energy Efficiency Rating		
	Current	Potential
Very energy efficient - lower running costs		
(92 plus) A		
(81-91) B	81	81
(69-80) C		
(55-68) D		
(39-54) E		
(21-38) F		
(1-20) G		
Not energy efficient - higher running costs		
England & Wales	EU Directive 2002/91/EC	

Agents Note: Whilst every care has been taken to prepare these particulars, they are for guidance purposes only. All measurements are approximate and are for general guidance purposes only and whilst every care has been taken to ensure their accuracy, they should not be relied upon and potential buyers/tenants are advised to recheck the measurements



OFFICE ADDRESS

Putterills Lettings
123 London Road
Knebworth
SG3 6EX

OFFICE DETAILS

01462 419333
lettings@putterills.co.uk
www.putterills.co.uk